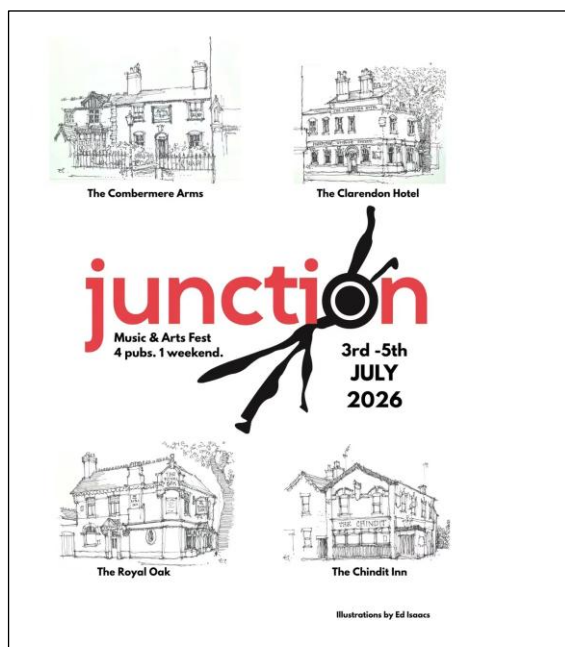


WOLVERHAMPTON SOCIETY OF ARTISTS

NEWSLETTER JULY 2026

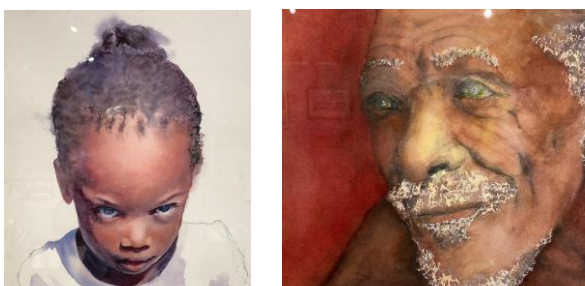


Coming up ...



The Junction Festival is being held from Friday 3 to Sunday 5 July and is focused on 3 pubs in and close to Chapel Ash. There are lots of events. On Saturday 4 July, Ralph Aldhous has organised a sketching based at the Combermere Arms, Chapel Ash and there is a 'Meet the Artist' event at The Chindit, Merridale Rd, on Friday 3 July at 6.00pm.

No life sessions and speaker nights in July and August – they resume in September. Our first outdoor painting/drawing day will be at Bratch Locks on Friday 10 July from 10.30 to 2.30. Meet up at Womborne Station car park



Sarah's (left) and Cath's (right) portraits

SPRING EXHIBITION

The Spring exhibition came down the other day and it was good that so many of the Society's artists were able to show their work there and be at the opening. We were pleased to invite James Millichamp, Head of Art at Shrewsbury High School, as our special guest to open the show.



James Millichamp and Exhibition Co-ordinator, Jacky (left) and President Steve (right) at the opening



Two prizes were presented: the Felix Award was won by Lorraine Bates (right below) for her ceramics and The Elsie Holland Award was handed to Jaclyn McDonald (left below) for her reduction lino print.



Finally, Weston Park decided to hold on to two of the artworks on show – one by Sarah Stokes and the other by Cath Oldfield. These will be displayed in the main house specially to demonstrate the techniques and subjects the artists used.

Well done to all concerned and special thanks to Jacky for all the hard work she put into the organisation.

MEMBER NEWS

We are pleased to welcome two new members to the Society – Gary Stonhill and Zoe Keeton.

Sadly, one of our most steadfast and active members, Jonathan George, known as Jon, has passed away. His funeral service will be held on 14 July at 12.30pm at the Mercia Forest Crematorium, Broad Lane, Essington. You can find a link to more details about Jon and the funeral at:

www.funeralguide.co.uk/obituaries/145273



In other news, a number of our members have work currently on show at the Royal Birmingham Society of Artists Summer exhibition at their gallery on Brook Street, Birmingham. This show is on until Saturday 1 August.

A number of WSA members are also members of the RBSA including its current President (Ed Isaacs) and a Past President (Steve Evans) and there have been historical links between the two societies. Sir Charles Wheeler and Edwin Butler Bayliss were two distinguished members of both societies. Many RBSA members, including Steve and Ed, started off as Friends of the Society and this is a great way of getting to show at the gallery and meeting the membership. You can find out more about becoming a Friend by visiting the RBSA website: rbsa.org.uk



Shaquelle Whyte

WHAT'S ON ELSEWHERE

We were treated last month to a talk by Professor Emerita Dew Harrison on the Rossettis, with particular reference to the current display of their works at Wightwick Manor. It was a fascinating talk, giving us an insight into their lives and their works and also the links with Wightwick.



The exhibition 'Rossettis: Siblings and Spouses' is on at Wightwick Manor until November 2026. Most of us know about Dante Gabriel and Christina, but this exhibition takes us on a journey into the extended family. It's on our doorstep and well worth visiting.



Shaquelle Whyte at Wolverhampton Art Gallery

Shaquelle Whyte is a phenomenal talent. Born in Wolverhampton in 2000, he studied at the Slade and the Royal College of Art and now has an exhibition of his works at Wolverhampton Art Gallery until the end of August. His large-scale oil paintings are hugely impressive and explore themes of myth, art history and identity. One of the paintings, 'Blackbird singing in the dead of night', has been acquired by the gallery. It is greatly to Wolverhampton Art Gallery's credit that they spotted this young local artist early on and has given him his own show.